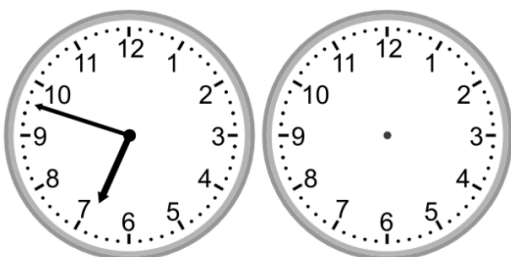


**Elapsed time - forward and backwards**

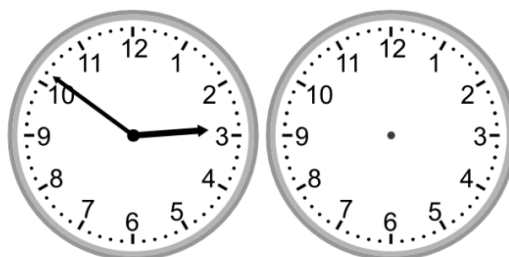
Draw the clock hands to show the time it was or will be.

1.



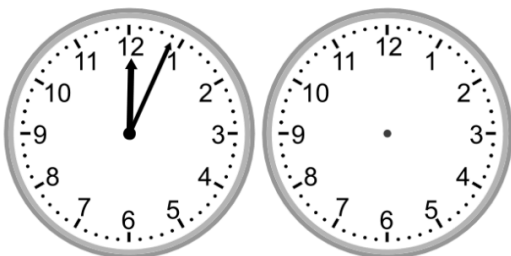
What time will it be in 4 hours 7 minutes?

2.



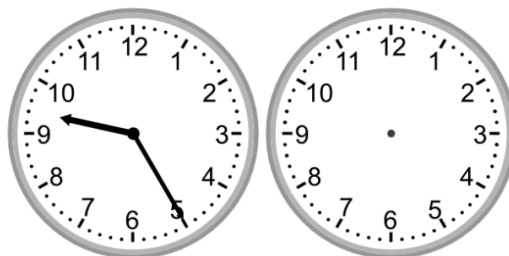
What time was it 2 hours 46 minutes ago?

3.



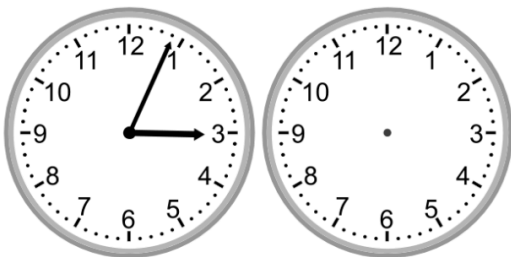
What time was it 2 hours 4 minutes ago?

4.



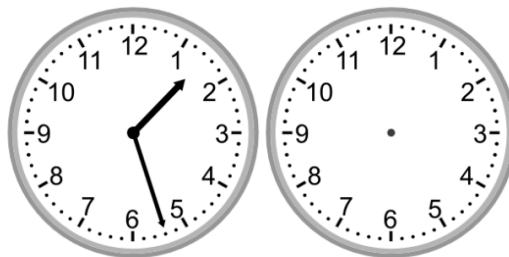
What time will it be in 4 hours 40 minutes?

5.



What time was it 3 hours 56 minutes ago?

6.



What time will it be in 5 hours 27 minutes?