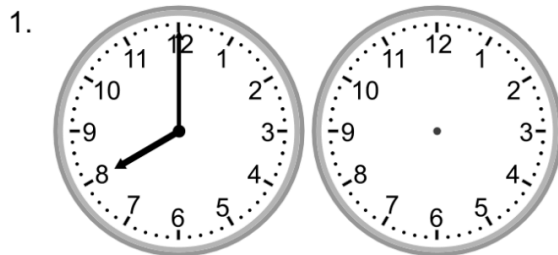
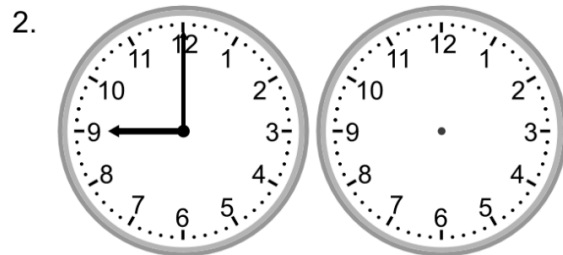


Elapsed time - half hours

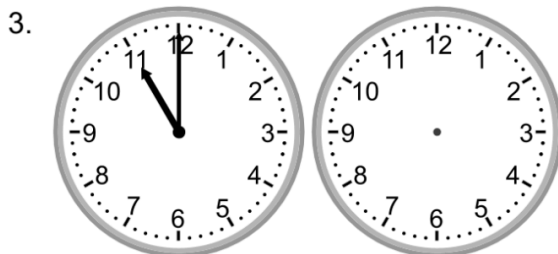
Draw the clock hands to show the time it will be.



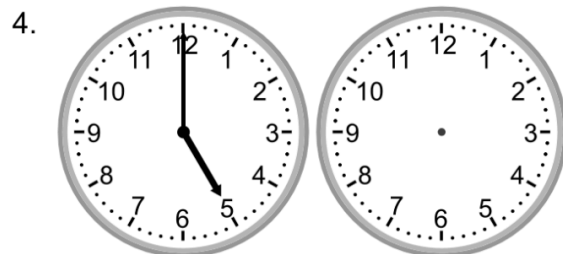
What time will it be in 1 hour?



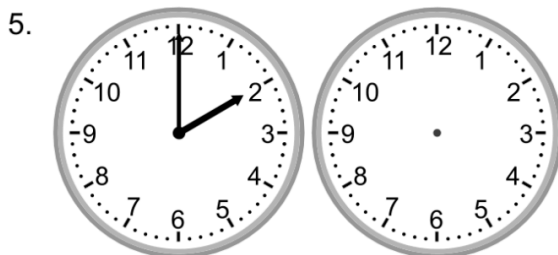
What time will it be in 1 hour 30 minutes?



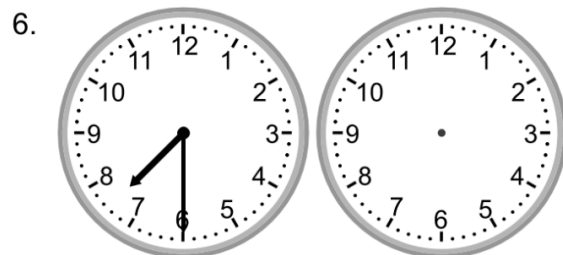
What time will it be in 5 hours 30 minutes?



What time will it be in 5 hours 30 minutes?



What time will it be in 4 hours?



What time will it be in 1 hour 30 minutes?