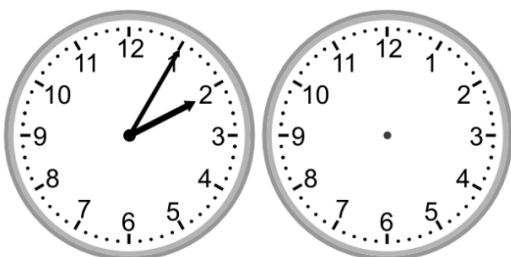


**Elapsed time - forward and backwards**

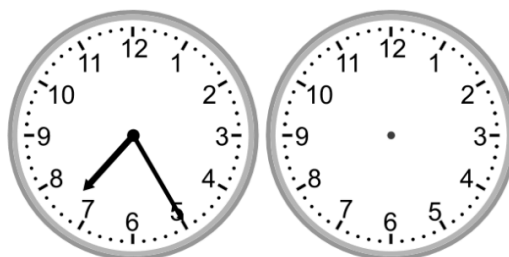
Draw the clock hands to show the time it was or will be.

1.



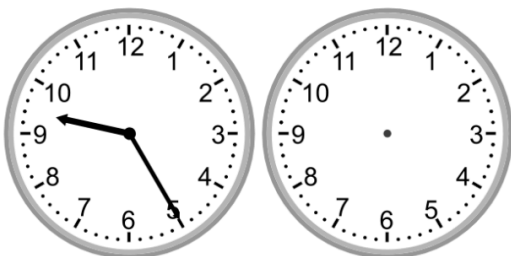
What time was it 4 hours 45 minutes ago?

2.



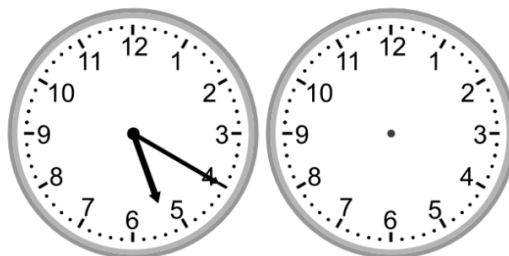
What time will it be in 2 hours 30 minutes?

3.



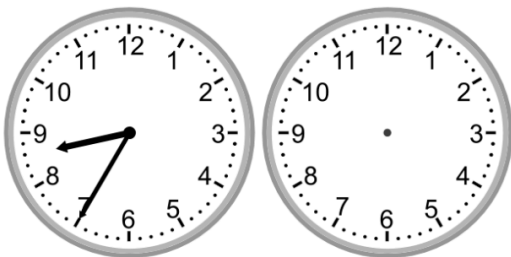
What time will it be in 4 hours 55 minutes?

4.



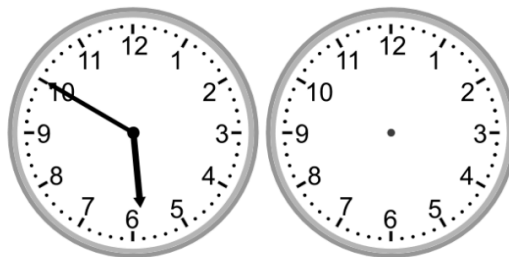
What time was it 2 hours ago?

5.



What time will it be in 4 hours 15 minutes?

6.



What time will it be in 1 hour?