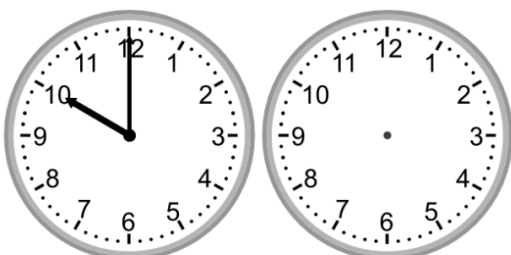


Elapsed time - forwards and backwards

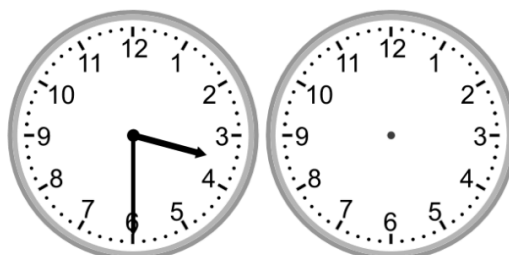
Draw the clock hands to show the time it was or will be.

1.



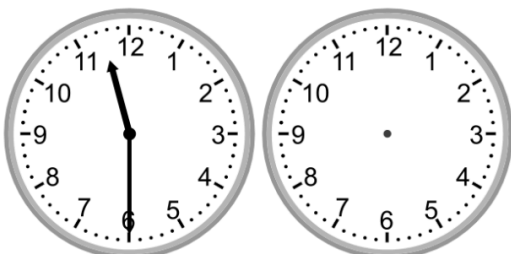
What time will it be in 5 hours 30 minutes?

2.



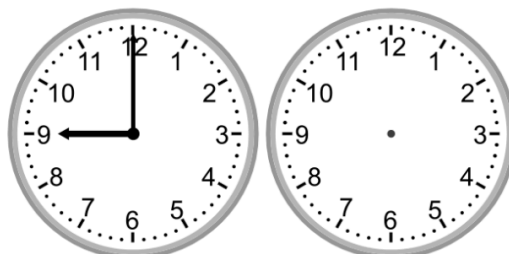
What time was it 4 hours ago?

3.



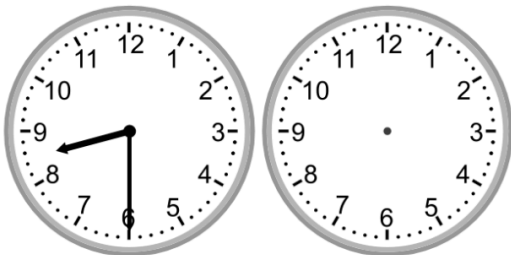
What time will it be in 2 hours 30 minutes?

4.



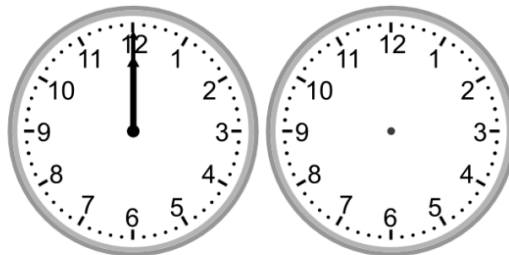
What time was it 3 hours ago?

5.



What time will it be in 4 hours 30 minutes?

6.



What time will it be in 3 hours 30 minutes?